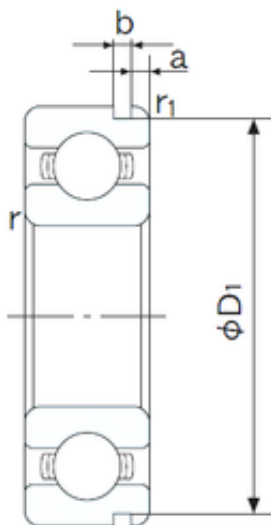




## DEARING OF AMERICA CORP.



40 mm x 80 mm x 18 mm NACHI 6208N deep groove ball bearings

Bearing No. 6208N

Size	40x80x18 mm
Bore Diameter	40 mm
Outer Diameter	80 mm
Width	18 mm
d	40 mm
D	80 mm
B	18 mm
C	18 mm
a	3.28 mm
b	1.9 mm
r min.	1.1 mm
r1 min.	0.5 mm
D1	76.81 mm
Weight	0.366 Kg
Basic dynamic load rating (C)	29,1 kN
Basic static load rating (C0)	17,9 kN
(Grease) Lubrication Speed	8200 r/min
Bore Type	Cylindrical Bore
Enclosure	Open
Configuration	Single Row
Bore Size	40 mm
Outside Diameter	80 mm
Width	18 mm
Fillet Radius/Chamfer	1.1 mm
r1	0.5 mm

6208N Bearing 2D drawings and 3D CAD models



## DEARING OF AMERICA CORP.

Groove Width	1.9 mm
Groove Diameter	76.8 mm
a (max)	3.3 mm
Dynamic Load Rating	29,100 N
Static Load Rating	17,900 N
Limiting Speed - Grease	8,700 rpm
Limiting Speed - Oil	10,000 rpm
Factor fo	14.0
Radial Clearance	0.006 to 0.020 mm
da (min)	47 mm
Da (max)	73 mm
Dx (min)	88 mm
ra (max)	1 mm
Cy (max)	4.6 mm